

Agilent ESA Spectrum Analyzer Firmware Upgrade Procedure

Purpose:

The purpose of this document is to provide a step-by-step procedure for obtaining, and installing the latest revision of firmware and Power Suite Utilities into an Agilent ESA Spectrum Analyzer.

Procedure:

Be sure to follow all of the parts of this procedure to complete this upgrade process:

- Create The Firmware Upgrade Disk Set
- Install Firmware into the Agilent ESA Spectrum Analyzer
- Performing the Instrument Self Alignment Routine
- Verifying the Installed Versions of Firmware & Power Suite Utilities Software

A. Create The Firmware Upgrade Disk Set:

NOTE: It is important to point out that the seven disks which will be used to transfer the firmware to the analyzer should be freshly formatted diskettes!

The seven disks can be labeled ahead of time as follows:

1. ESA Loader
 2. ESA Firmware 1 of 5
 3. ESA Firmware 2 of 5
 4. ESA Firmware 3 of 5
 5. ESA Firmware 4 of 5
 6. ESA Firmware 5 of 5
 7. ESA Power Suite
1. [Download the executable file to start the firmware upgrade procedure.](#)
Select the latest ESA Firmware Version download from the upgrade web page. A "Save As" dialogue text box will appear, as shown in **Figure 1**. This will allow you to store the Firmware Upgrade Executable in a directory of your choice.

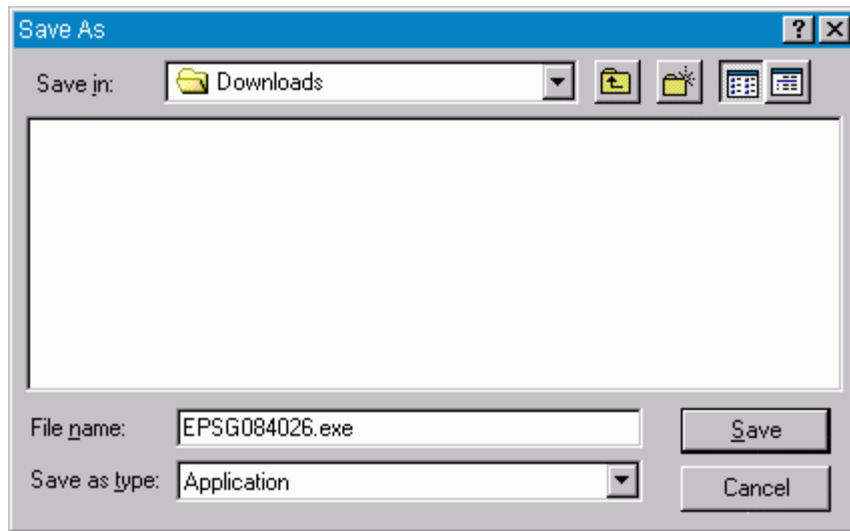


Figure 1

NOTE: The Firmware Upgrade Filename, as it resides on our server does not correspond to the revision of firmware being downloaded, but you can save it as such by entering a new filename in your “Save As” window. For example, the filename shown in Figure 1 could be changed to something such as A.07.02.exe so that you could more easily recognize it on your hard drive.

2. Double click on the Firmware Upgrade Executable file which was stored locally. The text box shown in **Figure 2** will briefly flash on the display.

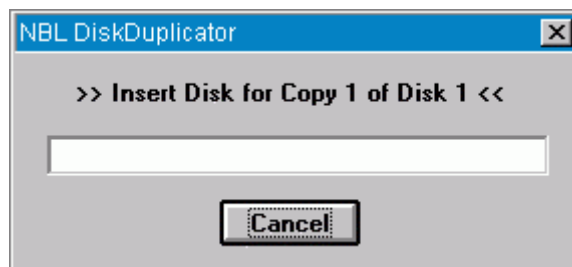


Figure 2

NOTE: This flashing text box will be replaced with the text box shown in Figure #3 if a disk is not inserted within approximately 10 seconds.

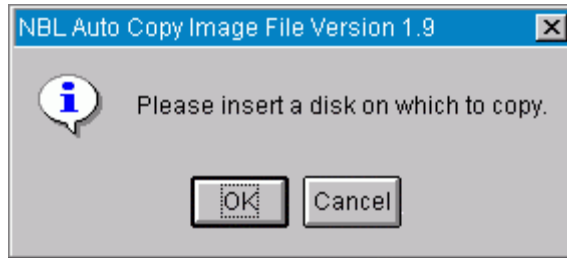


Figure 3

3. Insert the floppy diskette labeled "ESA Loader" into the disk drive and click on "OK".
The text box shown in **Figure 4** will be displayed which verifies if it is OK to overwrite the diskette.

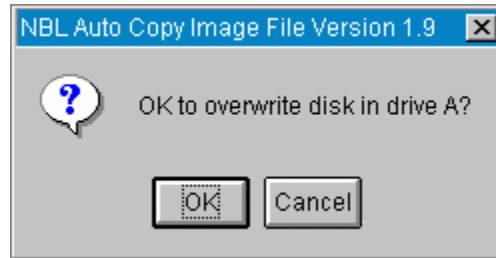


Figure 4

4. Click on "OK" and wait for the Firmware Upgrade Executable to create the "ESA Loader".
The text box shown in **Figure 5** will be displayed as the tracks are recorded onto the diskette.

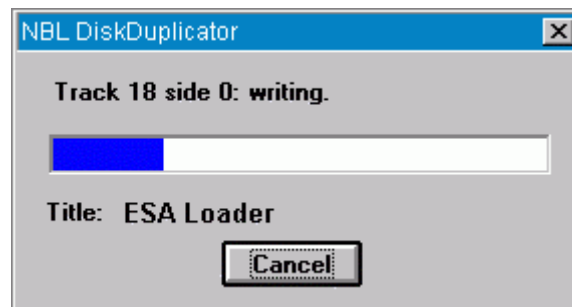


Figure 5

5. Wait for the Firmware Upgrade Executable to display the text box which verifies that it is OK to overwrite the next diskette.
The text box will look like the one shown in **Figure 6**.

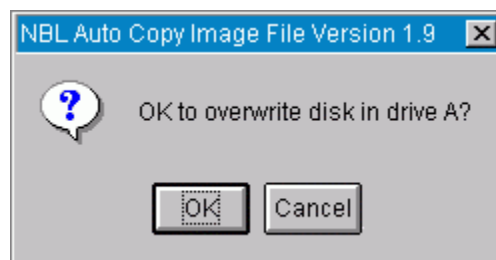


Figure 6

6. Insert the floppy diskette labeled "ESA Firmware 1 of 5" into the disk drive and click on "OK".
The text box shown in **Figure 7** will be displayed as the tracks are recorder onto the diskette.

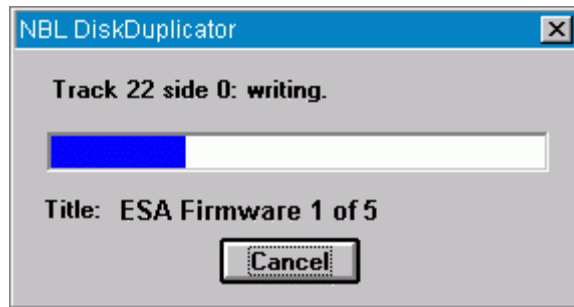


Figure 7

NOTE: Once the second diskette is created, the Firmware Upgrade Executable will again prompt you to insert the next diskette, and ask if it is OK to overwrite. To proceed, insert the next diskette and click OK.

7. Create the remaining five diskettes, "ESA Firmware 2 of 5", "ESA Firmware 3 of 5", "ESA Firmware 4 of 5", "ESA Firmware 5 of 5", and "ESA Power Suite" using the same process for generating the previous diskettes.

After all seven firmware upgrade diskettes have been created, the text box shown in **Figure 8** will be displayed.

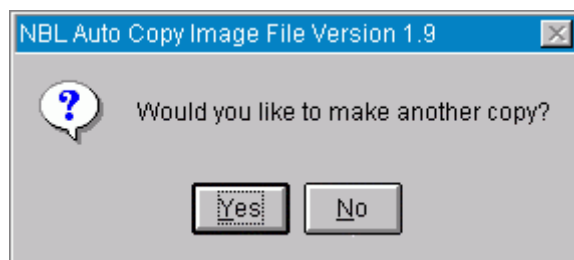


Figure 8

B. Install Firmware into the Agilent ESA Spectrum Analyzer:

NOTE: If the instrument being upgraded from version **A.04.07 or later**, and does not have option **B72** (Enhanced Memory), you will first need to uninstall any personalities or code compatibility software that is currently installed in the instrument, and re-install it after the firmware update has been completed.

To uninstall these software options press [**System**], {**More**}, {**Personalities**}, and then press {**Uninstall**}, [**Up/Dn**], {**Uninstall Now**} for each entry in the list of "**Installed Personalities**", except for the "**Power Suite Utilities**" which cannot be uninstalled.

1. Insert the floppy diskette labeled "ESA Loader" into the disk drive and cycle power.
After several seconds the ESA Firmware Loader utility window will appear on the display of the Agilent ESA. It will prompt you for the first of the firmware diskettes.
 2. Insert the floppy diskette labeled "ESA Firmware 1 of 5" into the disk drive and press {**CONTINUE**}.
After a few seconds the analyzer will display the revision of firmware which will be loaded into the analyzer, along with the number of firmware diskettes that you should have (5). It will again ask you to press {**CONTINUE**} if you would like to proceed with the firmware upgrade.
 3. Press {**CONTINUE**} and wait for the first firmware disk to load.
It will take approximately 5 minutes for this disk to load into the analyzer.
 4. When prompted, insert the floppy diskette labeled "ESA Firmware 2 of 5" into the disk drive and press {**CONTINUE**}.
It will take approximately 5 minutes for this disk to load into the analyzer.
 5. When prompted, insert the floppy diskette labeled "ESA Firmware 3 of 5" into the disk drive and press {**CONTINUE**}.
It will take approximately 5 minutes for this disk to load into the analyzer.
 6. When prompted, insert the floppy diskette labeled "ESA Firmware 4 of 5" into the disk drive and press {**CONTINUE**}.
It will take approximately 5 minutes for this disk to load into the analyzer.
 7. When prompted, insert the floppy diskette labeled "ESA Firmware 5 of 5" into the disk drive and press {**CONTINUE**}.
It will take approximately 5 minutes for this disk to load into the analyzer. After the firmware has been loaded off of the fifth diskette, the Firmware Installation Verification window will be displayed on the analyzer.
 8. Press {**CONTINUE**} and wait for the analyzer to copy the firmware into Flash memory.
It will take approximately 5 minutes for this process to take place.
-

NOTE: It is extremely important to **NOT CYCLE POWER** while the process being performed in this step is taking place. Doing so will disrupt the installation of the firmware and will prevent the firmware from completing a proper installation.

9. Once the copying of the firmware to Flash memory has completed, cycle power on the analyzer.
When the instrument boots back up you will be prompted to install the latest version of the ESA PowerSuite software, if it is not already installed.
10. If prompted to do so, insert the floppy diskette labeled "ESA Power Suite" into the disk drive and press {**Okay**}
It will take approximately 5 minutes for this disk to load into the analyzer.
11. When the "ESA Power Suite" diskette has finished loading press the [**Preset**] key on the instrument.

C. Performing the Instrument Self Alignment Routine:

After the firmware has been upgraded the instruments internal alignment routine will need to be run. To perform the alignment follow these keystrokes:

Press [System]
Press {Alignments}
Press {Align Now}
Press {All}

NOTE: It is necessary to connect the calibration cable and adapters provided with your ESA Spectrum Analyzer between the AMPTD REF OUT and the INPUT, for all models except the E4401B and E4411B.

D. Verifying the Installed Versions of Firmware & ESA Power Suite Utilities Software:

1. In order to verify the revision of firmware, follow these keystrokes:

Press [System]
Press {More}
Press {Show System}

The 5th line down on this screen should now list the loaded version to be the same as what was downloaded.

2. In order to verify the revision of the ESA Power Suite Utilities, follow these keystrokes:

Press [System]
Press {More}
Press {Personalities}

The Power Suite Utilities version should now be: **A.03.06**

Last Review: **10 July 2001**